

BirdDog Studio NDI

The World's Best NDI Converter



Studio NDI core features - available at release

Pure NDI

Studio NDI is the world's only hardware based encoder supporting NDI at the full Bitrate. Broadcast quality. Ultra-low latency. iFrame codec. No compromises.

Flexible Power

Studio NDI can be powered by Power over Ethernet (PoE) or via D-Tap from your camera battery. Eliminate wall warts (although there is one in the box if you really need it).

Cross conversion

Studio NDI is the world's only NDI Encoder offering hardware based SDI to HDMI and HDMI to SDI cross conversion.

Tally

Studio NDI makes Tally easy. Zero configuration, built-in large Tally display, and external Tally output.

Audio

Studio NDI offers 8 channels of embedded audio over SDI and HDMI.

Studio NDI bonus features - coming soon*

Dual Encode

Simultaneously encode SDI and HDMI into full quality NDI with no added latency.

Decode

Receive NDI and output to SDI or HDMI. Perfect for stadiums, auditoriums, and any application where you need to show NDI on a screen.

Comms

Talk directly with all production staff over a dedicated NDI Audio channel for Comms. Simply plug a headset in to Studio NDI and chat away.

PTZ Control

Studio NDI eliminates the need to run two cables to your PTZ camera. Plug your PTZ Camera directly into BirdDog and maintain full PTZ control. Requires optional USB to Ethernet adapter.

Advanced timing

By utilising cutting-edge network timing protocols Studio NDI allows multi-camera environments to benefit from synchronisation across all cameras.

Multicast

Connect one, ten, or even hundreds of NDI receivers to a single source to save on your network traffic.

Bonus features enabled via future firmware updates.

BirdDog Studio NDI

NDI 3.0
SUPPORTED
SOON!



NDI™ Network Device Interface

Complete access, control, and creativity over IP.

Release your video productions from the technical and physical limitations of standard broadcast infrastructures. Easily transition to video over IP with NDI, NewTek's innovative Network Device Interface technology, and ready-to-use software enabling interconnected production workflows.

Remove Routing Constraints

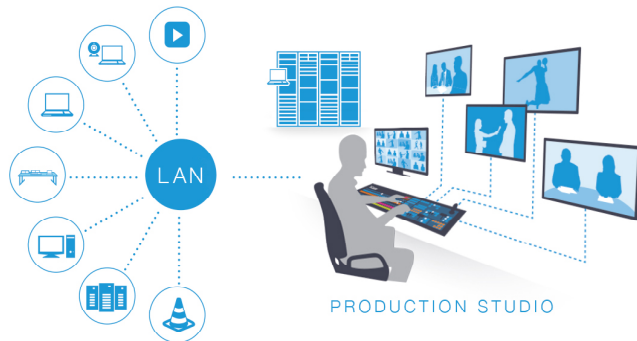
Produce your shows in a completely new way—using sources from all over your network, not just what's physically patched into your SDI video router. NewTek NDI is a royalty free standard anyone can implement to connect video equipment across a network. Your production switcher, capture system, media server—any NDI-enabled device on the network—can see and access content from all other devices, allowing more sources than ever before to be used for live production.

Reduce Costs (and Deployment Time)

Forget about investing in completely new facilities, networks, or signal infrastructures. NewTek NDI is built on a sophisticated foundation that can send and receive vast amounts of information using a familiar standard: the Ethernet-based LAN. With NDI's unprecedented encoding efficiency and performance, your network can accommodate multiple simultaneous, high-quality, ultra-low latency video streams.

Leap into the Future Today

Future-proof your production environment, taking advantage of technology advancements, while protecting your current investments. Compatible with existing SDI and IP-based technologies, and independent of changing specifications and formats, NDI will also support integration with ASPEN, SMPTE 2022, and other emerging standards.



NDI is a trademark of NewTek, Inc.

Technical Specifications:

Video Inputs

HDMI 1.4a
3G-SDI

Video Outputs

HDMI 1.4a
3G-SDI

Supported Resolutions

1080p 59.94/50/29.97/25
1080i 59.94/50
720p 59.94/50
SD PAL/NTSC

Video Protocol Support

NDI Realtime Encoding / NDI Realtime Decoding

Audio

Embedded via SDI/HDMI
Analog 3.5mm Mic/Headphone

Network

1000baseT

Power

802.3af/802.3at PoE (Power over Ethernet)
5-18v DC

External Tally

3.5mm GPIO 2 position (Program/Preview)

Display

Bi-color LED Display
3 Selectable modes (Info, Tally, Multi-Tally)

Configuration

Web-based (Mobile and Desktop compatible)

Physical Dimensions

103mm (W) x 150mm (H) x 21.5mm (D)